

BLOOMINGTON



Public Schools

SCHOOL PAGES

Fall 2018-19



Student info in Hub, Infinite Campus



A Message from Superintendent Les Fujitake

WELCOME BACK

A PURPOSE AND A PROMISE



In preparation for the start of school, parents and students are encouraged to log in to the Hub to view important back-to-school access to information. The Hub, a password-protected website for parents and guardians, provides easy access to homework, calendar, classroom sites, school news, attendance and bus information.

To log in to the Hub, visit bloomingtonschools.org/hub. Bus information, lunch PINs, class schedules, and locker numbers and combinations if one is assigned by the school are all available now.



Bus routes and pick-up/drop-off times are available, but note these may change slightly up to the start of school.

Hub usernames are emailed to families with an email address on file several times before the start of school. To update your email address with the district, log in to Infinite Campus and provide contact information and preferences.

Need help recovering passwords?

Visit login.isd271.org Click "Need Help?" to begin the email recovery process.

New to Bloomington Public Schools and have not logged in? Click on "Claim My Account" and follow the on-screen prompts.

Need to register or update email address?

- Media staff is available during back-to-school events to provide account support.
- During the school year, contact your school media director for Hub support.
- During the summer, contact the district Tech Center at 952-681-6456 or techcenter@isd271.org.

For more information, visit bloomingtonschools.org/parents-hub.



Superintendent Les Fujitake greets Virg Senescall at the Education Foundation of Bloomington Chip In For Schools Golf Classic. Read more about the event on page 8.

Photo by Cyndi Nightengale

On behalf of our team, we welcome back students and families to another year of academic and personal growth. We thank you for believing in and entrusting us with the education of your children. We take great pride in serving our community.

This year we are excited to share a refreshed strategic plan that provides a clearer vision of how we can improve our services to prepare students to thrive in this rapidly changing world.

Our vision is Pathways to Career and College Success. Our goal is to help every student envision his or her future and how to get there. This includes encouraging students to think earlier about the world of work and careers they want to pursue and to learn about the post high school education or training required for jobs in their areas of interest.

A signature piece of our career and college work is a Personal Growth Plan (PGP) for each student. The PGP includes a series of grade-based activities and measurements to help students make informed choices, set relevant and achievable goals and take action to achieve

those goals. Teachers, counselors and other staff provide consultation and support throughout the process.

Because parents nurture and support each child's educational journey, it is important that we partner with and engage them to help their children make informed career and college decisions.

We start the conversation with this back-to-school issue of School Pages; the special insert (pages 3-6) introduces our work on the outcomes we want for students and how we are going beyond what we've done in the past to focus on what is best for each of our students.

Please also take a few minutes to visit bloomingtonschools.org/careers to check out our new video, *Career and College: A New Way of Thinking*.

From early childhood through graduation, our Pathways to Career and College vision prepares all students for a successful future with an emphasis on career and college readiness. We believe students enter our schools with a promise. We must ensure they leave with a purpose.

Back-to-School Guide

Welcome to the 2018-19 school year! Here, you'll find important back-to-school information. For more school-and student-specific information, visit the Hub and your school's website. Let's have a great year!

2018-19 School Directory

Community Education 681-6100
Tamra Sieve, Director
Community Ed. Campus, 2575 W 88th St.

Early Learning Services 681-6200
Jeanna Miller, Director
Pond Center, 9600 3rd Avenue 681-6200
Southwood Center, 4901 W. 112th Street 806-8900

Elementary Schools: Grades K-5

Hillcrest Community, 9301 Thomas Road
Calvin Keasling 681-5300

Indian Mounds, 9801-11th Avenue
Joan Maland 681 6000

Normandale Hills, 9501 Toledo Avenue
Andrew Vollmuth 806-7000

Oak Grove, 1301 W. 104th Street
Brian Cline 681-6800

Olson, 4501 W. 102nd Sreet
Paul Meyer 806-8800

Poplar Bridge, 8401 Palmer Avenue
Roberto Cantu 681-5400

Ridgeview, 9400 Nesbitt Avenue
Steve Abrahamson 806-7100

Valley View, 351 E. 88th Street
Cori Thompson 681-5700

Washburn, 8401 Xerxes Avenue
Andrew Wilkins 681-5500

Westwood, 3701 W. 108th Street
Hugh Roberts 806-7200

Middle Schools: Grades 6-8

Oak Grove, 1300 W. 106th Street
Brian Ingemann 681-6600
Galaxy Youth Center 681-6606

Olson, 4551 W. 102nd Street
Jeremy Kuhns 806-8600
Galaxy Youth Center 806-8606

Valley View, 8900 Portland Avenue
Megan Willrett 681-5800
Galaxy Youth Center 681-5806

High Schools: Grades 9-12

Jefferson, 4001 W. 102nd Street
Jaysen Anderson 806-7600
Activity Center 806-7880

Kennedy, 9701 Nicollet Avenue
Carol Kampa 681-5000
Activity Center 681-5280
BEACON School 681-5056



BLOOMINGTON PUBLIC SCHOOLS 2018-2019 SCHOOL CALENDAR

- School in Session
- Teacher Professional Development, Conference* or Work Day
- Elementary Assessment Day
- K-12 Early Release Day

START AND END DATES

Sept 4 First Day of School 6-12
Sept 5 First Day of School K-5
June 6 Last Day of School K-12

KEY DATES

Aug 27-31 Teacher Professional Development
Aug 29 Elementary Assessment Day
Sept 3 No School K-12 – Labor Day
Sept 4 No School K-5 – Elementary Assessment Day
Sept 4 First Day of School 6-12
Sept 5 First Day of School K-5
Oct 17 No School K-12 – Conference* or Workday
Oct 18-19 No School – Education Minnesota Conference
Oct 22 No School K-12 – Teacher Professional Development
Nov 21-23 No School K-12 – Thanksgiving Break
Nov 28 Two Hour Early Release Day K-12 – Professional Development
Nov 29 Two Hour Early Release Day K-12 – Professional Development
Nov 29 End of Trimester 1
Nov 30 No School K-12 – Conference* or Workday
Dec 24-Jan 4 No School K-12 – Winter Break
Jan 21 No School K-12 – Martin Luther King Jr. Day
Feb 1 No School K-12 – Elementary Professional Development, Conference* or Workday
Feb 18 No School K-12 – President's Day
Mar 5 Two Hour Early Release Day K-12 – Professional Development
Mar 6 Two Hour Early Release Day K-12 – Professional Development
Mar 6 End of Trimester 2
Mar 7-8 No School K-12 – Teacher Professional Development, Conference* or Workday
Mar 25-29 No School K-12 – Spring Break
Apr 19 No School K-12
May 27 No School – Memorial Day
Jun 6 End of Trimester 3
Jun 7 Teacher Work Day

JULY 2018					JANUARY 2019				
M	T	W	T	F	M	T	W	T	F
2	3	4	5	6		1	2	3	4
9	10	11	12	13	7	8	9	10	11
16	17	18	19	20	14	15	16	17	18
23	24	25	26	27	21	22	23	24	25
30	31				28	29	30	31	
AUGUST 2018					FEBRUARY 2019				
M	T	W	T	F	M	T	W	T	F
		1	2	3					1
6	7	8	9	10	4	5	6	7	8
13	14	15	16	17	11	12	13	14	15
20	21	22	23	24	18	19	20	21	22
27	28	29	30	31	25	26	27	28	
SEPTEMBER 2018					MARCH 2019				
M	T	W	T	F	M	T	W	T	F
3	4	5	6	7					1
10	11	12	13	14	4	5	6	7	8
17	18	19	20	21	11	12	13	14	15
24	25	26	27	28	18	19	20	21	22
					25	26	27	28	29
OCTOBER 2018					APRIL 2019				
M	T	W	T	F	M	T	W	T	F
1	2	3	4	5	1	2	3	4	5
8	9	10	11	12	8	9	10	11	12
15	16	17	18	19	15	16	17	18	19
22	23	24	25	26	22	23	24	25	26
29	30	31			29	30			
NOVEMBER 2018					MAY 2019				
M	T	W	T	F	M	T	W	T	F
			1	2			1	2	3
5	6	7	8	9	6	7	8	9	10
12	13	14	15	16	13	14	15	16	17
19	20	21	22	23	20	21	22	23	24
26	27	28	29	30	27	28	29	30	31
DECEMBER 2018					JUNE 2019				
M	T	W	T	F	M	T	W	T	F
3	4	5	6	7	3	4	5	6	7
10	11	12	13	14	10	11	12	13	14
17	18	19	20	21	17	18	19	20	21
24	25	26	27	28	24	25	26	27	28
31									

*Individual schools determine actual school conference dates
Approved by the School Board February 12, 2018

Back-to-School Events

The 2018-19 academic calendar features two elementary student assessment days prior to the first day of school: Wednesday, Aug. 29 and Tuesday, Sept. 4. The early assessment will help teachers determine the instructional reading level of each student, set academic goals and design effective instructional plans so personalized instruction can begin at the start of the school year. Parents received a letter over the summer with teacher assignments and instructions for signing up online for a 30-minute assessment conference appointment.

Back-to-school events will be held in conjunction with elementary early assessment days. Parents and students will be able to meet school staff, visit classrooms, set up lunch accounts, discuss health concerns with nurses, learn about their PTA and more.

The first day of school for K-5 students is Wednesday, Sept 5.

Elementary Schools

- Hillcrest Community School**
Aug. 29 or Sept. 4 from 8:30 a.m. - 4 p.m.
- Indian Mounds Elementary School**
Aug. 29 or Sept. 4 from 8 a.m. - 3:30 p.m.
- Normandale Hills Elementary School**
Aug. 29 or Sept. 4 from 8 a.m. - 3:30 p.m.
- Oak Grove Elementary School**
Aug. 29 or Sept. 4 from 8 a.m. - 3:30 p.m.
- Olson Elementary School**
Aug. 29 or Sept. 4 from 8 a.m. - 3:30 p.m.
- Poplar Bridge Elementary School**
Aug. 29 or Sept. 4 from 8 a.m. - 3:30 p.m.
- Ridgeview Elementary School**
Aug. 31 or Sept. 4 from 8 a.m. - 3:30 p.m.
- Valley View Elementary School**
Aug. 29 or Sept. 4 from 8 a.m. - 3:30 p.m.
- Washburn Elementary School**
Aug. 29 or Sept. 4 from 8 a.m. - 3:30 p.m.
- Westwood Elementary School**
Aug. 29 or Sept. 4 from 8 a.m. - 3:30 p.m.

Middle and High Schools

- Middle and high schools will conduct back-to-school events prior to the first day of school, Tuesday, Sept. 4.
- Oak Grove Middle School**
Aug. 30 from 3-7 p.m.
- Olson Middle School**
August 30— 3-7 p.m.
- Valley View Middle School**
Sixth Grade Orientation: Aug. 23 from 4-6 p.m.
Back-to-School Night, all grades: Aug. 30 from 3-7 p.m.
- Jefferson High School**
Jumpstart, all students: Aug. 22 from 11 a.m.-7 p.m.
Back-to-School Night: Aug. 28 at 7 p.m.
- Kennedy High School Connect Day**
Connect Day: Aug. 23 from 10 a.m.-4 p.m.

Pathways to CAREER & COLLEGE

Preparing young people for the future is no small task.



To position our students for a successful future, schools must work in partnership with parents and the community to help students graduate with the necessary knowledge, skills and attitudes to thrive in our rapidly changing economy.

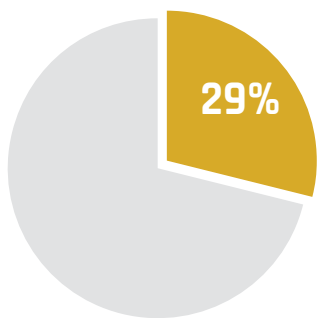
The Pathways to Career and College plan is preparing our students to graduate career and college ready. The plan includes individualized learning opportunities, a Personal Growth Plan for every student and milestones to measure and monitor progress throughout the school years.

PERSONAL GROWTH PLANS

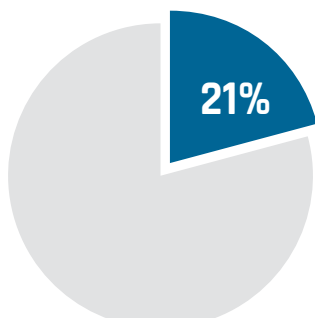
Every middle and high school student creates a Personal Growth Plan (PGP) to help navigate the school years with their future goals in mind. Students complete PGP activities on a variety of grade-level topics to help them explore their strengths and interests, learn about career and college planning and develop “soft skills” sought by employers. PGPs pull student data from various systems into an individual dashboard for at-a-glance reference, so students and their parents can make sure that progress is keeping pace with goals for graduation and postsecondary plans.



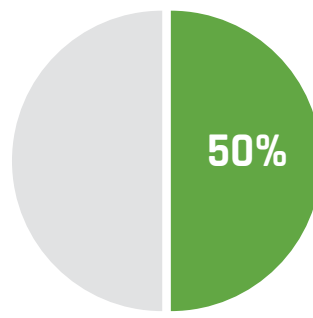
SURPRISING FACTS



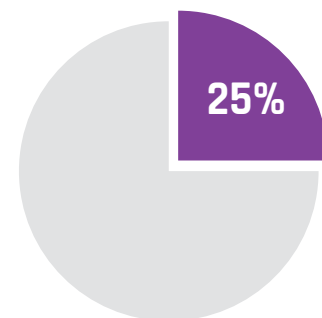
29% of students who start college never earn a degree.



21% take 5 or more years to graduate.

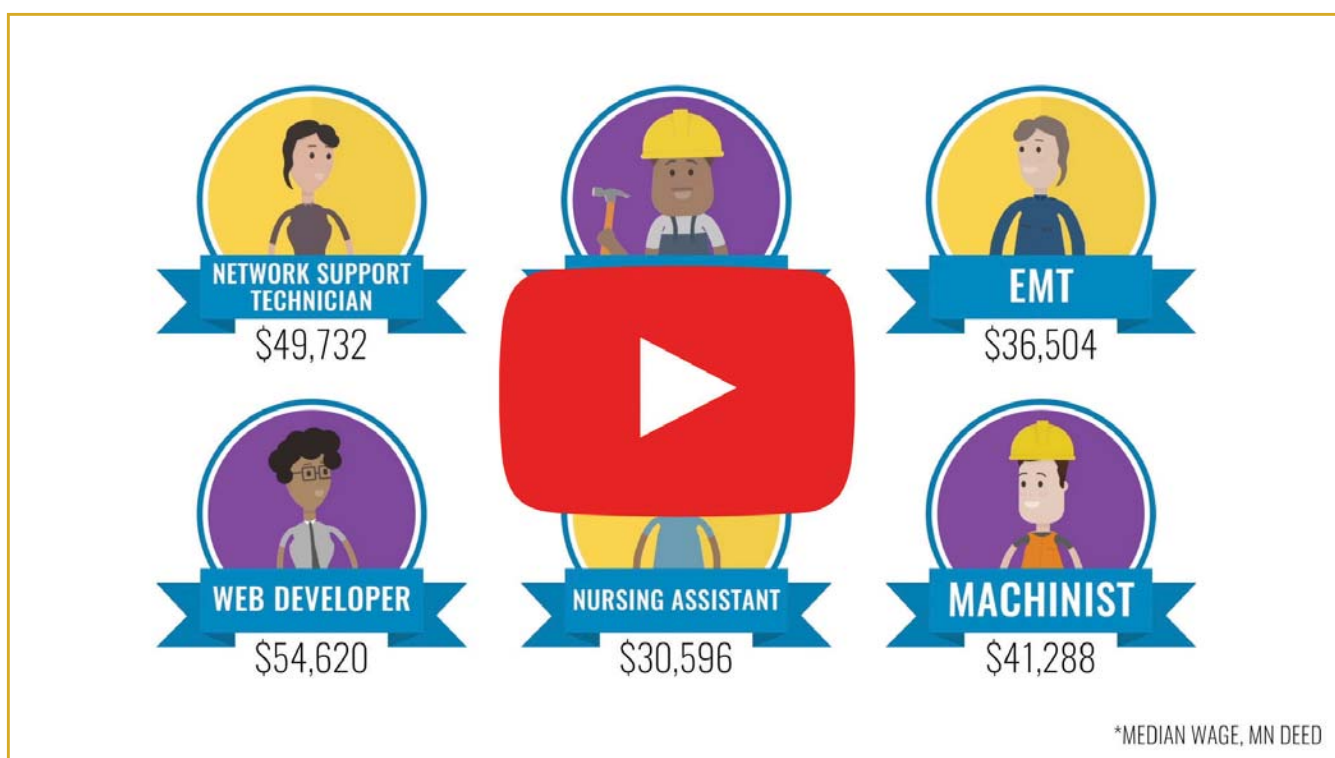


Only 50% complete a degree in 6 years.



Only 25% are employed in their field in two years after graduation.

CAREER AND COLLEGE: A NEW WAY OF THINKING



Visit bloomingtonschools.org/careers to view our new video, *Career and College: A New Way of Thinking*, to learn how Bloomington is meeting the changing needs of employers and helping create awareness about postsecondary options.

Pathways to CAR

STUDENTS ENTER BLOOMINGTON PUBLIC SCHOOLS



BLOOMINGTON PUBLIC SCHOOLS is committed to preparing all students to follow personalized learning paths from birth to graduation that prepare students to succeed. We measure students' growth and progress.



PERSONAL GROWTH PLANS (PGP)

To meet individual learning needs and interests, each student is empowered to develop a Personal Growth Plan (PGP) to manage, and evaluate academic, career, and personal and social development.

We prepare students for future success through high quality academics, exploration opportunities, and enrichment activities with students' career and college goals.

All of our work is focused on ensuring every school is making strides to increase student performance. Using multiple indicators, we assess and share our progress in our annual report.



MORE INFORMATION

Community Relations Office
952.681.6403
commrelations@isd271.org



Birth to Age 3



PRE-SCHOOL
READY



Ages 3-5



KINDERGARTEN
READY



Grades K-3



ON COURSE FOR
ELEMENTARY SUCCESS



BLOOMINGTON PUBLIC SCHOOLS

CAREER & COLLEGE

STUDENTS WITH A PROMISE AND LEAVE WITH A PURPOSE

to develop their hopes and dreams. Our Pathways to Career and College plan provides
to succeed in college and the global workforce. Each pathway features milestones to

Personal Growth Plan to plan, monitor,

activities, and courses aligned



Grades 4-5



MIDDLE SCHOOL
READY



Grades 6-8



HIGH SCHOOL
READY



Grades 9-12



CAREER & COLLEGE
READY

www.bloomingtonschools.org/pathways

WHY PGP? HERE'S WHAT SENIORS SAY



"PGP helped me so much. Since my parents didn't go to college and since I'm the oldest child, I have no one close to me that can help me with anything related to college."



"I really liked the activity where I answered various survey questions and it suggested different career paths that I would be good at based on my answers. I didn't have any clue about which career path I would pursue, and this helped me narrow it down."



"Thanks to PGP, I have learned how to fill out the FAFSA and search for college scholarships, and now I have a better understanding of college loans."



"I am so grateful the PGP activities were required. If not, I would have missed out on countless opportunities to plan for my future."

REAL WORLD LEARNING

We offer high school students opportunities for real world learning through internships, mentorships and work-based courses. The internship/mentorship course covers job searching, interviewing and networking skills and allows students time in their class schedule to complete internship or volunteer hours with community businesses and organizations. The work-based learning program provides career skills while allowing students to learn entry-level work experience in a job. Bloomington Career and College Academy classes offer hands-on learning for students. Community businesses interested in creating mentorships or internships, please contact Debbie Belfry, coordinator of career development, at dbelfry@isd271.org.



Alexander S.

Internship: Real estate investment firm
Learned more about the career field, and became more confident in networking and why it's important.
Career goal: Continue to grow my own company



Jasmine J.

Internship: HGA architects
Learned what being an architect was all about, how to be professional.
Career goal: Architecture major



Gavin L.

Internship: Target Corp.
Learned about long days with lots of meetings, teamwork and working with a national team.
Career goal: Business—sports management

Family Academy prepares parents, children for school



“I spend time reading, playing, and learning with my child. We are closer because we are coming to school together.”

Family Literacy Academy (FLA) helps parents who speak English as a second language learn alongside their preschool children as they prepare for school. The program, a partnership between Bloomington Early Learning Services and Metro South Adult Basic Education, combines preschool, toddler (18 months and older) classes, and English and parenting classes. Children attend preschool Monday-Friday, adults attend English class

four days a week and a parenting class once a week, and families come together for Families Learning Together (FLT) each month.

FLA is held at Pond Center, 9600 3rd Ave. S., Monday–Thursday, 1:30 – 4 p.m. Transportation is available for a small fee.

Register at Pond Center or MetroSouth, or call 952-681-6200.

Para español, llame al 952-681-6219.



Wanted School Bus Drivers

Minnesota, like much of the country, is facing its most significant school bus driver shortage in recent history. Bloomington is also in need of new drivers, and has been recruiting in a variety of ways.

“Our drivers are truly committed to the children of Bloomington, and getting them safely to and from school each day,” said Tim Rybak, Director of Operations for BPS. “We offer a competitive wage and great benefits, flexible shifts, and state-of-the-art buses with easy-to-navigate GPS units in every bus.”

Be part of a team that puts student safety and well being first!

No experience?
We offer fully paid training!
4-6 hours per day
AM/PM split shifts Monday-Friday

Great benefits including health and dental, PERA pension, sick time and 10 paid holidays per year

Apply online:
bloomingtonschools.org/apply

8801 Lyndale Avenue South
transportation@isd271.org

952-681-6300

Health Commons at Pond offers free clinic services

Students and families are welcome to visit the Health Commons at Pond Center for free, convenient health care. No appointment is necessary and there is no cost for Bloomington Public Schools students and families.

Clinic hours are Mondays from 11 a.m. – 7 p.m.

The clinic is a partnership with the Minnesota State University Mankato Graduate School of Nursing. Care is provided by graduate nursing students, supervised by licensed nurse practitioners and faculty.

Health Commons services include treating infections and minor illnesses; free sports physicals for students; immunizations; health screenings and referrals; vision, hearing and early intervention screenings; mental health support and referrals; and nutrition counseling.

For more information, visit bloomingtonschools.org/healthcommons or call 952-681-6277.



IN THE KNOW

Before- and After-School Safety

Kids' SAFARI and Early Learners Academy are moving to an access card system for student drop-off and pick-up outside of school day hours. Access cards will allow entrance at a designated door for each building, except for Indian Mounds, Normandale Hills and Westwood. The use of access cards is part of our ongoing effort to improve security measures both during and outside of the school day. For more information, contact Kids' SAFARI at 952-681-6128 or kidssafari@isd271.org.

Peachjar

Since moving to Peachjar, an e-flyer management system, in December 2016 to send digital flyers directly to parents, we've saved nearly 3 million sheets of paper and reduced staff time and costs. Last year, we sent 2,383 digital school and community flyers via email.

Parents who wish to subscribe an additional email address, or staff or community members who wish to receive school and community flyers can sign up at peachjar.com. For more information, visit bloomingtonschools.org/peachjar.

Chip in for Schools Golf Classic

The annual Education Foundation of Bloomington Chip In For Schools Golf Classic raised over \$46,000 thanks to sponsors and participants in the July event at Dwan Golf Course. The event has raised more than \$166,000 in four years, with all proceeds going toward scholarships and enhanced learning opportunities for students. Mall of America, Kraus-Anderson and many other businesses and groups donated money and door prizes for the event.

35W/106th Street Construction

The Minnesota Department of Transportation (MnDOT) is developing plans for the replacement of the 106th St. and I-35W bridges over the Minnesota River, along with the freeway from the bridge to Cliff Road. The project will take nearly two years to complete, but substantial work on the bridges and freeway will likely not begin until early 2019, according to MnDOT.

Both the southbound I-35W on-ramp from 106th St. and the off-ramp from I-35W to 106th St. will be closed for the duration of the project. Expect additional lane closures and detours as work is completed.

The City of Bloomington will reconstruct the I-35W and W 106th St. interchanges, including permanent closures of W. Bloomington Freeway from 104th St. to 106th St., and River Terrace at 106th St.



Bloomington summer school partnered with the InSports Foundation to provide sports clinics for students, including lacrosse, soccer, capture the flag and education sessions.

Non-Profit Org.
U.S. Postage
PAID
Twin Cities, MN
Permit #2086

Bloomington ISD 271
Educational Services Center
1350 West 106th Street
Bloomington, MN 55431-4126

**ECRWSS
RESIDENTIAL POSTAL CUSTOMER**

School Pages is published by Bloomington Public Schools
1350 W. 106th Street
Bloomington, MN 55431-4126
www.bloomingtonschools.org

School Pages is printed and delivered by mail to 39,500 Bloomington households at a cost of 14 cents per copy to inform Bloomington residents about their public schools.

Editor: Rick J. Kaufman, APR
Executive Director of Community Relations
952.681.6403

Writers: Andrea George, Kate Martin
Photos: Andrea George

2018 Bloomington School Board

Dawn Steigauf, Chair
Nelly Korman, Vice Chair
Maureen Bartolotta, Clerk
Dick Bergstrom, Treasurer
Beth Beebe, Director
Tom Bennett, Director
Jim Sorum, Director
Superintendent **Les Fujitake**, Ex Officio

BLOOMINGTON



Public Schools

POINTS OF PRIDE

- **Washburn Elementary School** was named a 2018 Sustained Exemplar PBIS (Positive Behavior Intervention and Supports) School by the Minnesota Department of Education.
- Ridgeview Elementary School fifth graders **Frankie Meany** and **Evie Stockinger** placed third and eighth respectively in the national InvestWrite essay competition.

- **Bloomington Educational Cable Television (BEC-TV)** received a Silver Award for its Bloomington Public Schools Centennial video from the Minnesota Association of Government Communicators (MAGC).

- Jefferson and Kennedy high school theatre programs are Hennepin Theatre Trust Spotlight Musical Theatre Program honorees for their productions of "Hello, Dolly" and "Beauty and the Beast," respectively. Individual awards:

- Jefferson's **"Hello, Dolly"**: outstanding recognition in the categories of technical crew, student orchestra and overall technical team; honorable mention in the categories of overall production, overall performance, ensemble performance, movement/dance performance by an ensemble, light and sound board operators, vocal performance by an ensemble and acting performance by an ensemble.

- **Jillian Sjoquist** (Jefferson): finalist for the Triple Threat Award
- **Alexa Schirber** and **Sjoquist** (Jefferson): outstanding performances in leading roles

- **Jack Wisnieski** and **Tom Rajucla** (Jefferson): honorable mention for performances in supporting roles

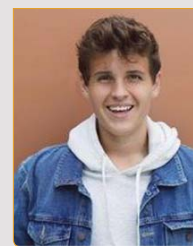
- **Em Bonney**, **Mina Hammer** and **Greg Kohler** (Jefferson): outstanding technical leadership

- Kennedy's **"Beauty and the Beast"**: honorable mention for overall technical team and vocal performance by an ensemble

- **Johanna Engebretson** (Kennedy): outstanding performance in a leading role

- **Isaiah Heege** (Kennedy): outstanding performance in a supporting role

- **Jennifer Tincher**, **Dylan Taylor** and **Danny Vazquez** (Kennedy): honorable mention for performances in supporting roles



Jefferson High School 2018 senior **David Floeder** earned a top score of 1600 on the SAT. On average, 0.03 percent of students taking the SAT earn the top score.

- Oak Grove Middle School students **Bella Marker** and **Grace Jarvis** took first place in the Minnesota Map Contest for the third consecutive year with their map about the St. Paul Gangster Era, qualifying for the national competition. Oak Grove and Olson middle school Dimensions Academy students won four of the top five places in the competition: **Megan Muff** and **Nora Priede Von Herber** (Oak Grove) took second, **Joseph Shetaye** (Olson) took fourth, and **Preston Le** (Olson) finished fifth.

- Ridgeview Elementary School third grader **Ethan McIntosh** earned a perfect score of 20 in the WordMasters Challenge, a national vocabulary competition. Nationally, only 68 third graders achieved the same result. Ridgeview's **Quynh Nguyen** also achieved an outstanding score of 19 in the challenge.



- **Jennifer Tincher** (Kennedy) received Best in Show honors at the 2018 Metro West Conference Art Competition for her colored pencil drawing, Polynesian Picnic (above). Other high school students earning awards include the following:

- **Katie Weston** (Jefferson) – Award of Excellence
- **Makenzie Booth** (Kennedy) – Award of Excellence
- **Savanna Hanxana** (Kennedy) – Award of Excellence
- **Rachel Thomka** (Jefferson) – Award of Merit

- **Bloomington Public Schools** is one of 15 school districts in the U.S. to be granted funding for an Institute of Education Sciences (IES) collaboration grant. BPS will partner with the Search Institute to explore the impact of positive student-teacher relationships and everyday interactions on student motivation and perseverance leading to improving academic outcomes. The district also received two Competitive Striving Readers Comprehensive Literacy grants from the Minnesota Department of Education. The grants will provide a combined \$1.6 million in funding over the next two years to fund staff development and parent education around early language and literacy development.

- The Education Foundation of Bloomington Prodigy Award winners for the 2017-18 academic year are the **Oak Grove Elementary School administrative team**; the **Transportation Office team**, and the **Poplar Bridge Elementary School fifth grade flexible math team**.

- Bloomington School Board member **Nelly Korman** is a National Education Association (NEA) Foundation Global Learning Fellow. Korman will participate in a two-day workshop this fall in Washington, DC, and an international field study in South Africa next summer.

